

# Project 1 Residency

Claire Atkinson  
Danielle Schell  
Cassidy Varone



PALAZZI - FLORENCE ASSOCIATION FOR INTERNATIONAL EDUCATION  
FLORENCE UNIVERSITY OF THE ARTS  
THE AMERICAN UNIVERSITY OF FLORENCE  
SCHOOL OF INTERIOR DESIGN, ENVIRONMENTAL ARCHITECTURE AND SUSTAINABILITY  
DEPARTMENT OF INTERIOR AND VISUAL DESIGN

IDIDID300-101 INTERMEDIATE INTERIOR DESIGN  
SECTION 201 SPRING 2020

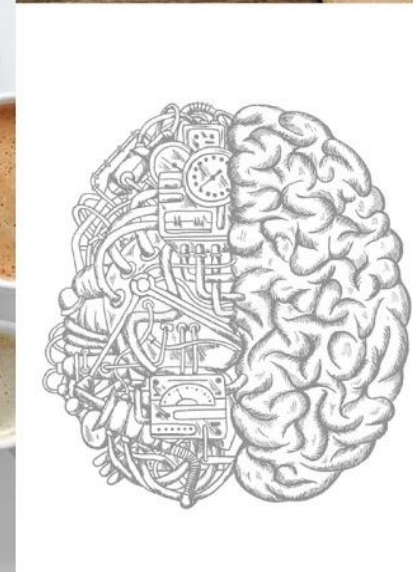
INSTRUCTOR : Giulio Vinci







Two Eros themed apartments designed to incorporate aspects of togetherness, love, and closeness. These spaces will be relaxing and a place of gathering. The two Logos driven apartments will focus on being more practical and useful and include a productive space for business.





# Description of Residency

Our project resembled the overall theme of our semester, balancing Eros and Logos, through splitting the location's apartment into two different themes. Two of the apartments, the **Family** apartment and the **Lover's Suite**, invoke the Eros theme. The other two apartments, the **Business/Solo** apartment and the **Traveler's** apartment, invoke the Logos theme. Eros represents the emotion, and the function of a relationship. In order to portray this, we made a decision to incorporate rooms dedicated to gathering and bonding for both the Lover's Suite and the Family Apartment.

**Eros -** The separation of Family versus the Lover's Suite is decided based on the degree of intimacy and space for each apartment. For example, one intimate gathering space within the lover's apartment is the bathroom, specifically, the tub. Rather than in the Family apartment, where the gathering space is the dining and living area. The blue overtones of the Family Apartment are rooted from the idea that family home life can be chaotic. This accent of blue provides a sense of relaxation and calmness throughout the apartment, as this apartment is a getaway for this type of demographic. However, every material put in this apartment is sturdy and kid-proof, allowing for chaos to reign if need be. The idea of the Lover's Suite revolves around close intimacy between partners. This apartment is decorated with mostly black and white tones, with accents of red. These colors resemble the solidity and unity of opposites attracting, black and white, to create something romantic and serene. The materials used in this apartment such as marble invoke a luxurious getaway for partners to be present with each other.

**Logos -** The idea of logos projects reasoning and rationality. In terms of design, logos drives the desire for functionality and practicality in a space. Both apartments, the Business/Solo apartment and the Traveler's apartment, display spaces that host productivity and functionality for someone on the go. Specifically, the Business/Solo apartment is dedicated to a business traveler. The apartment contains many multifunctional pieces, such as the kitchen island, to promote efficiency and functionality for this demographic. Other multifunctional pieces of the Business/Solo apartment includes the twin beds: which allows the beds to be pushed together or pulled apart (in order to be more functional if there were two business associates sharing the space). The color tones of this apartment are neutral, promoting a comfortable yet still workable environment. The Traveler's apartment also follows the same theme and idea. This is a practical space with the twin bed option available in order to improve comfortability and functionality for any group that may be staying here. The neutral color palette is also carried into this holiday apartment in order to create the classic European look as well as lack enthusiasm opinion, sentiment, and keep the rational theme of Logos.





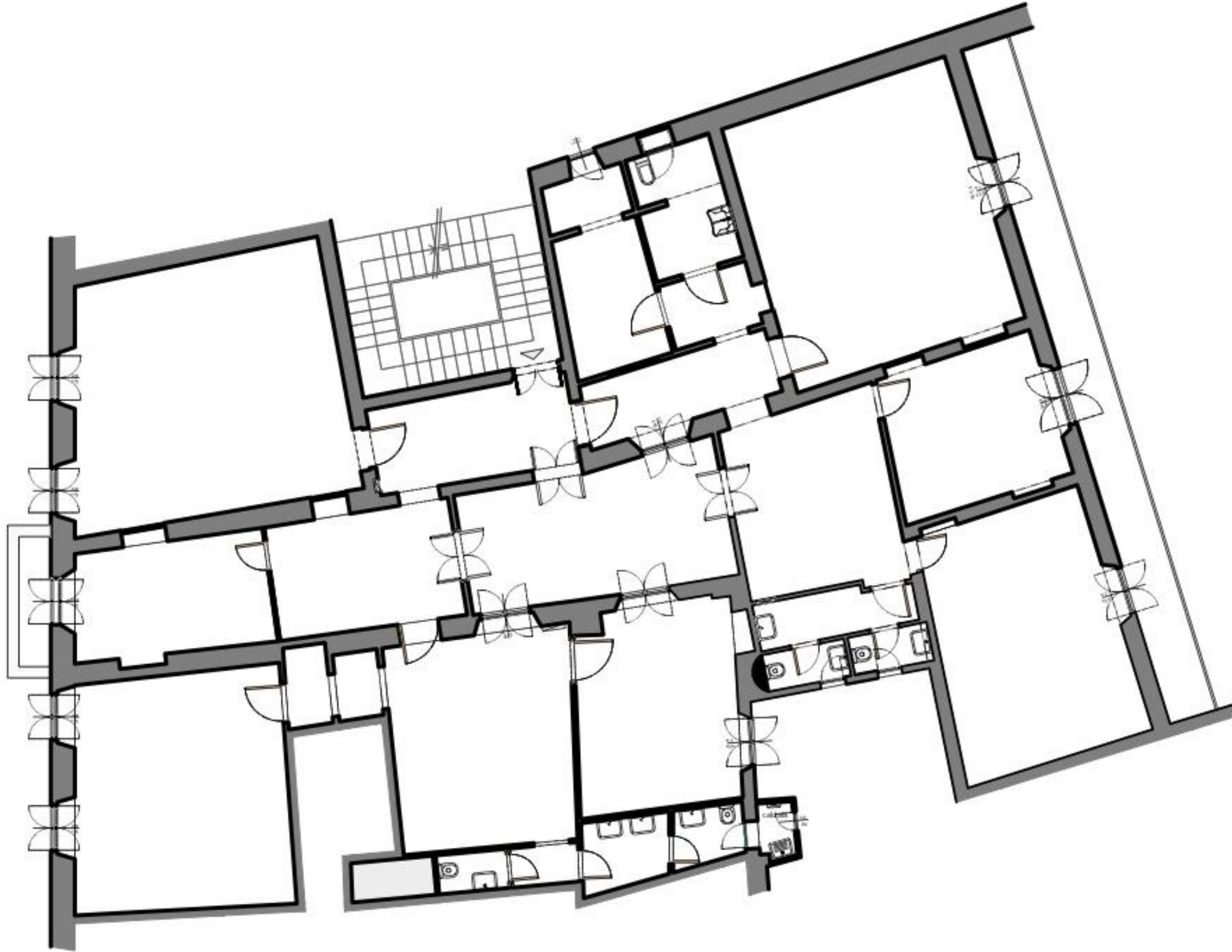
# Location

Via dell'Oriuolo 43

This building is currently owned by Florence University of the Arts and is used as classrooms for the Business school.

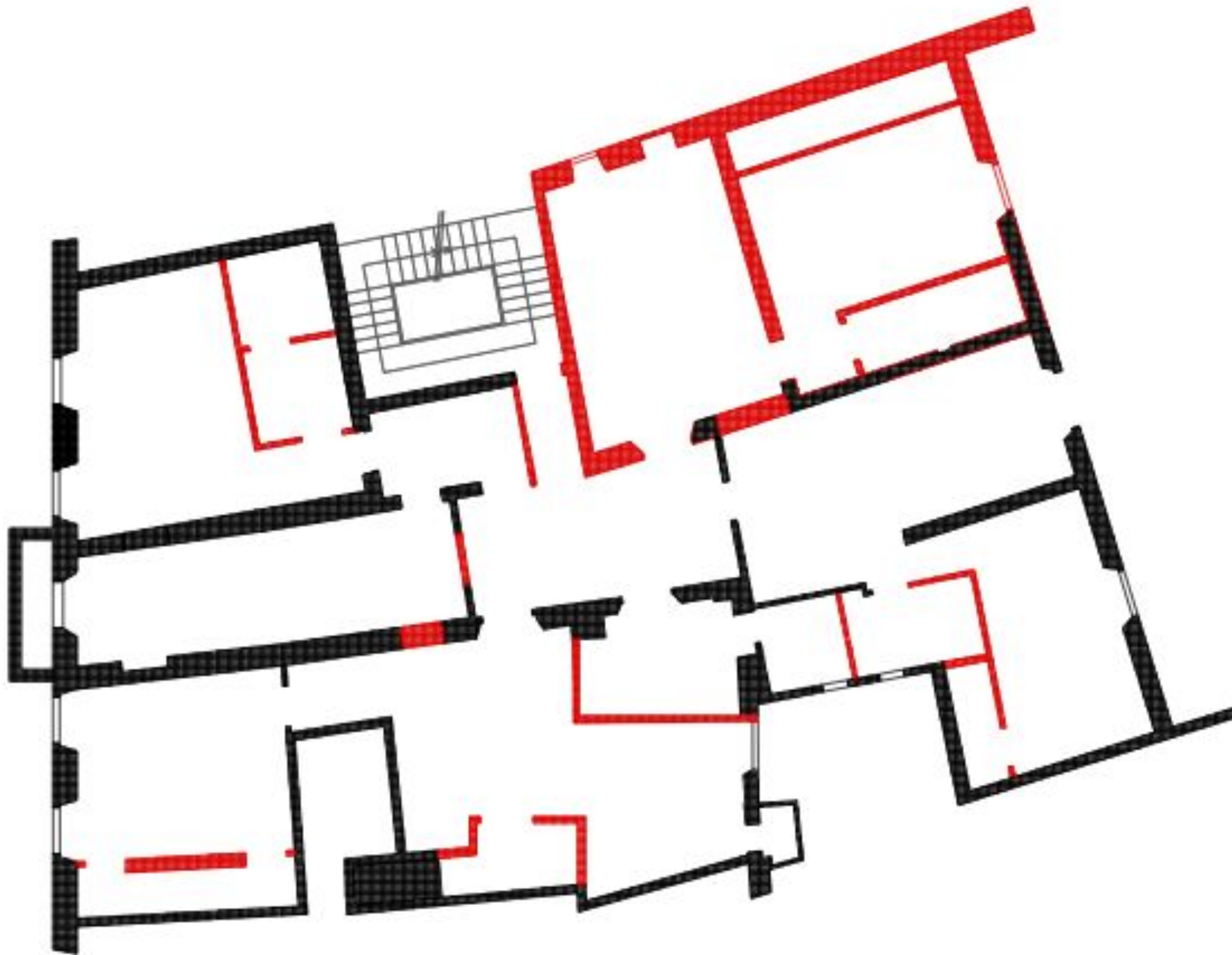


# Location Plan



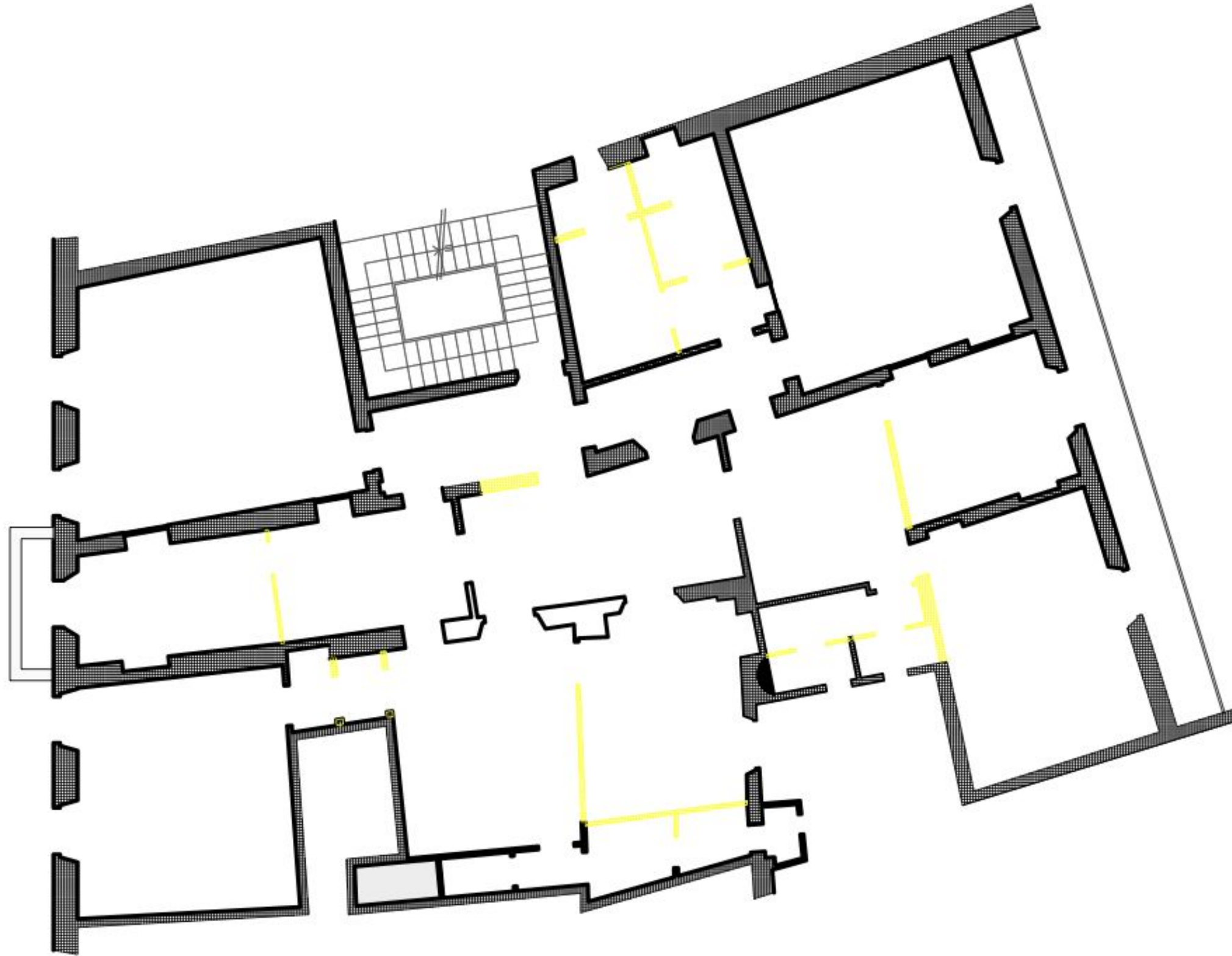


# Demolition





# New Construction





# Floor Plan



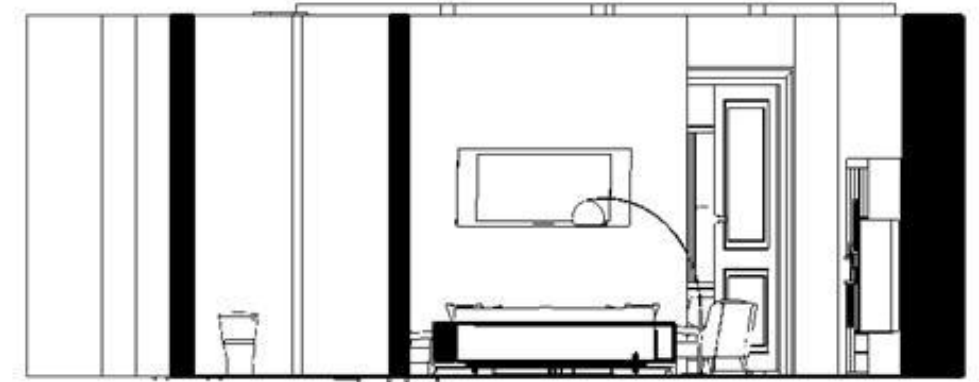


# Family Apartment

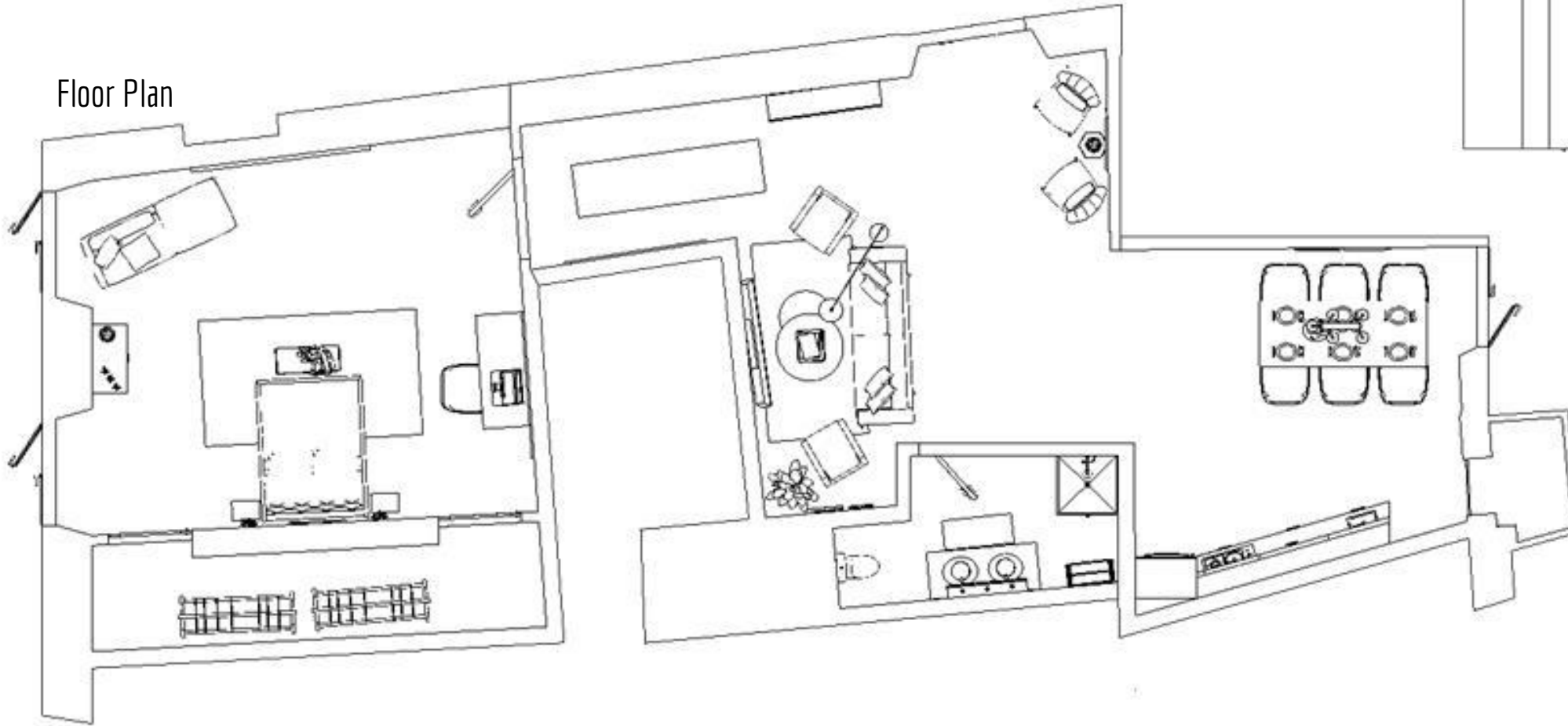


# Plans & Sections

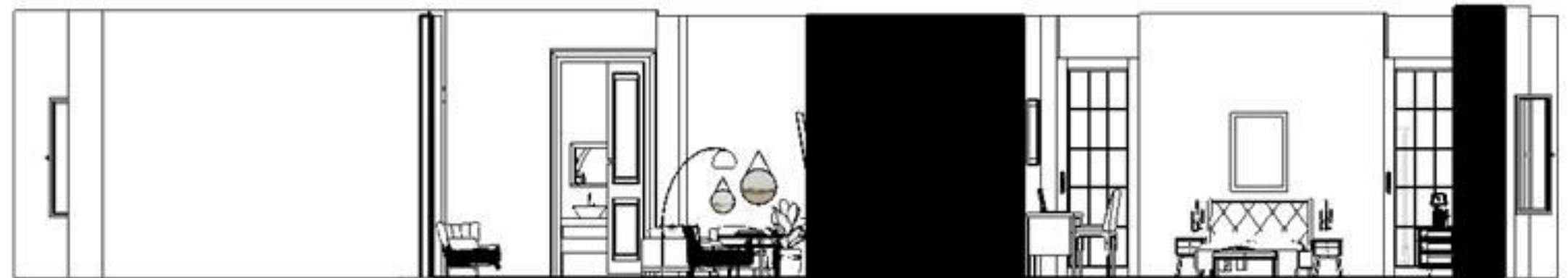
Section 1



Floor Plan



Section 2





# Axonometric







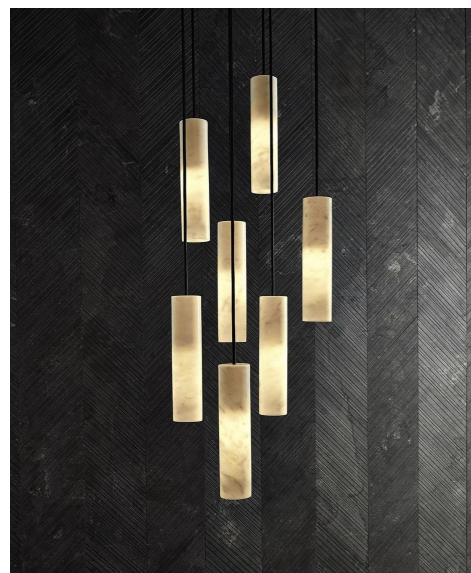
# Renderings





# Furnishings

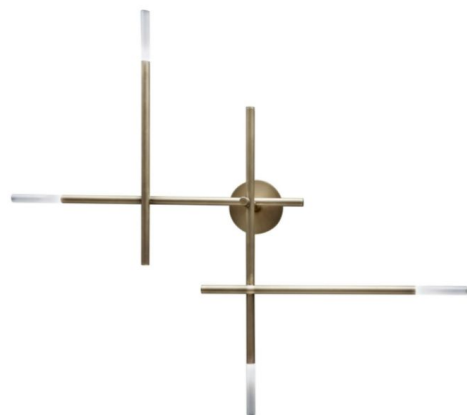
## Kitchen



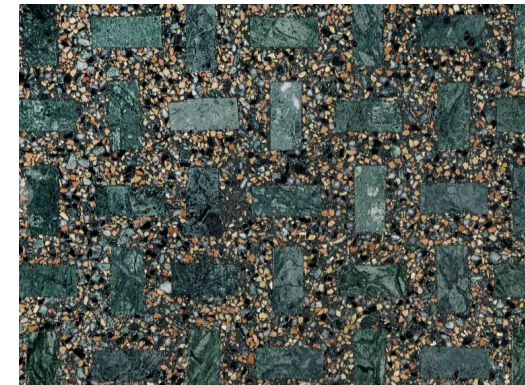


# Furnishings

## Bedroom



## Bathroom

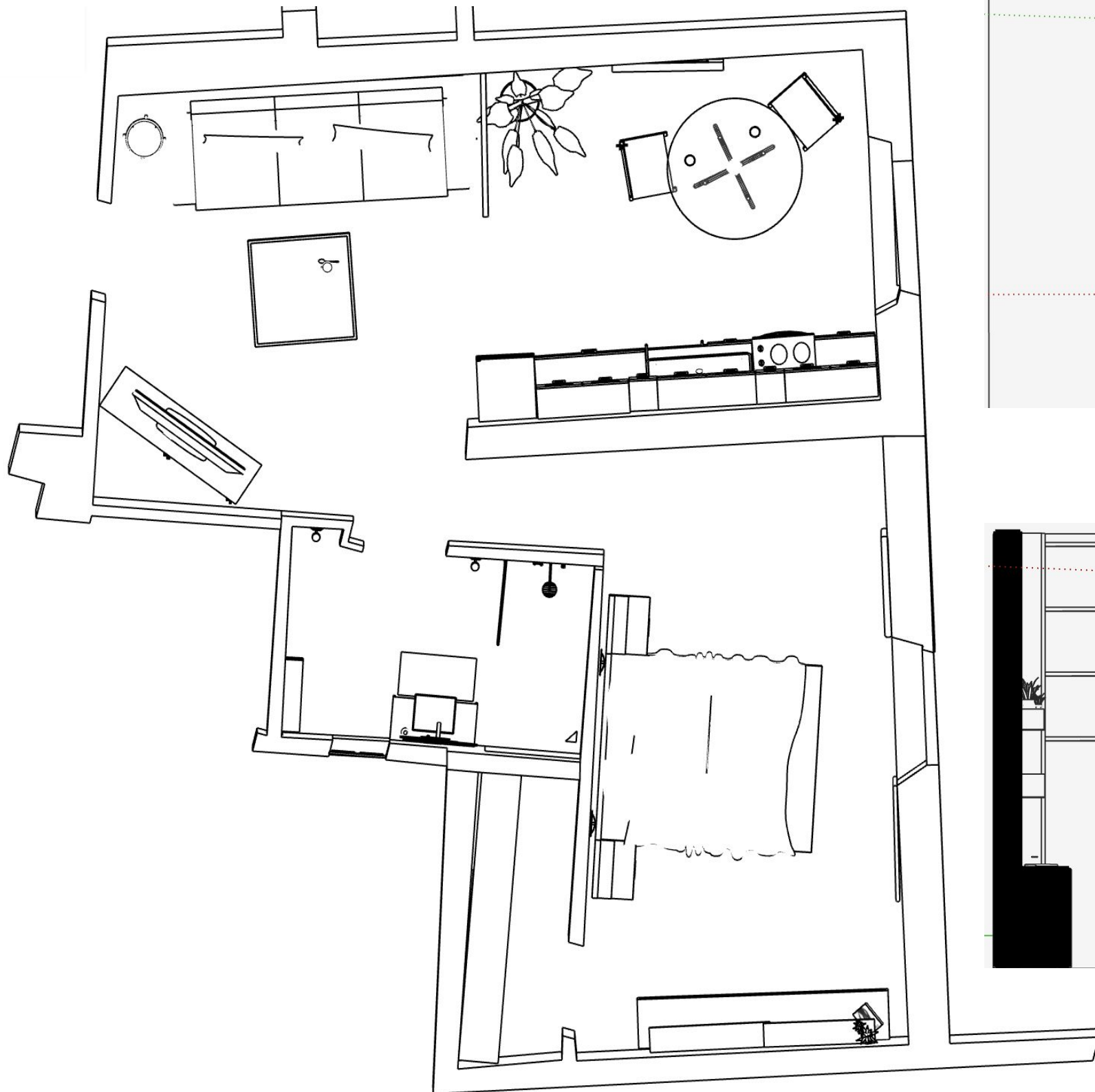




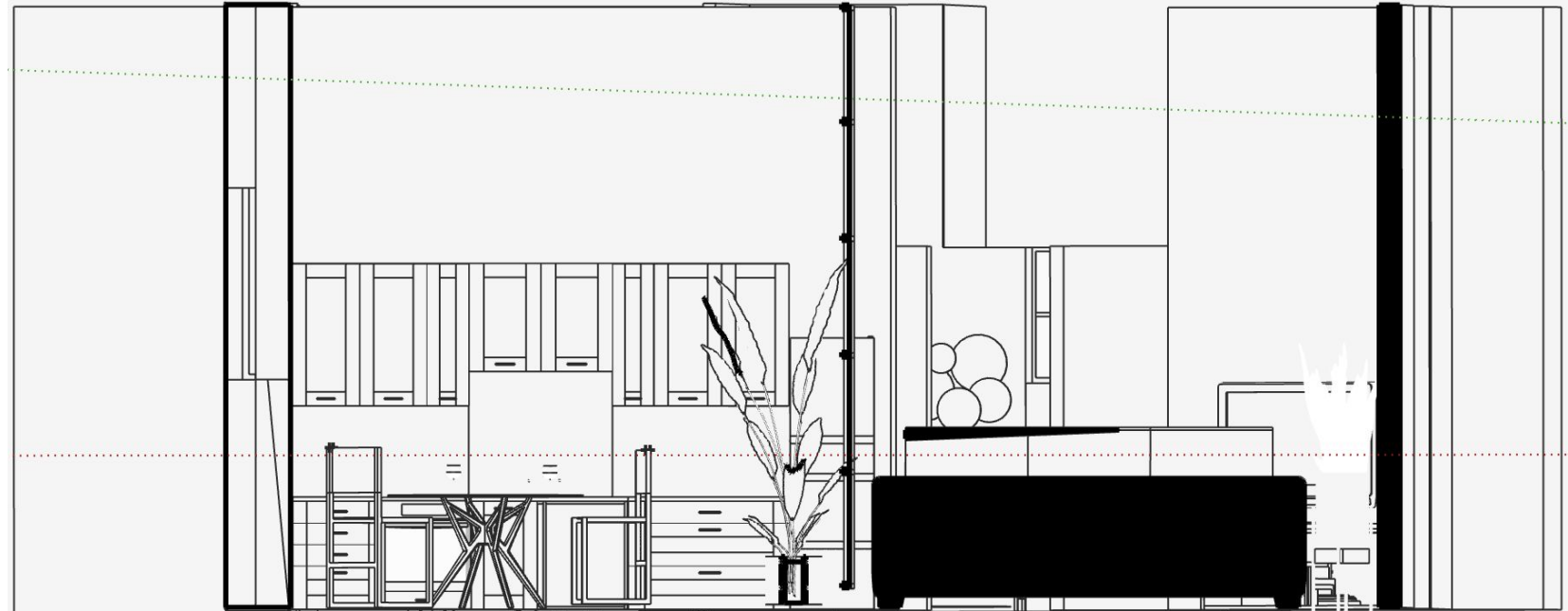
# Lovers Suite Apartment

# Plans & Sections

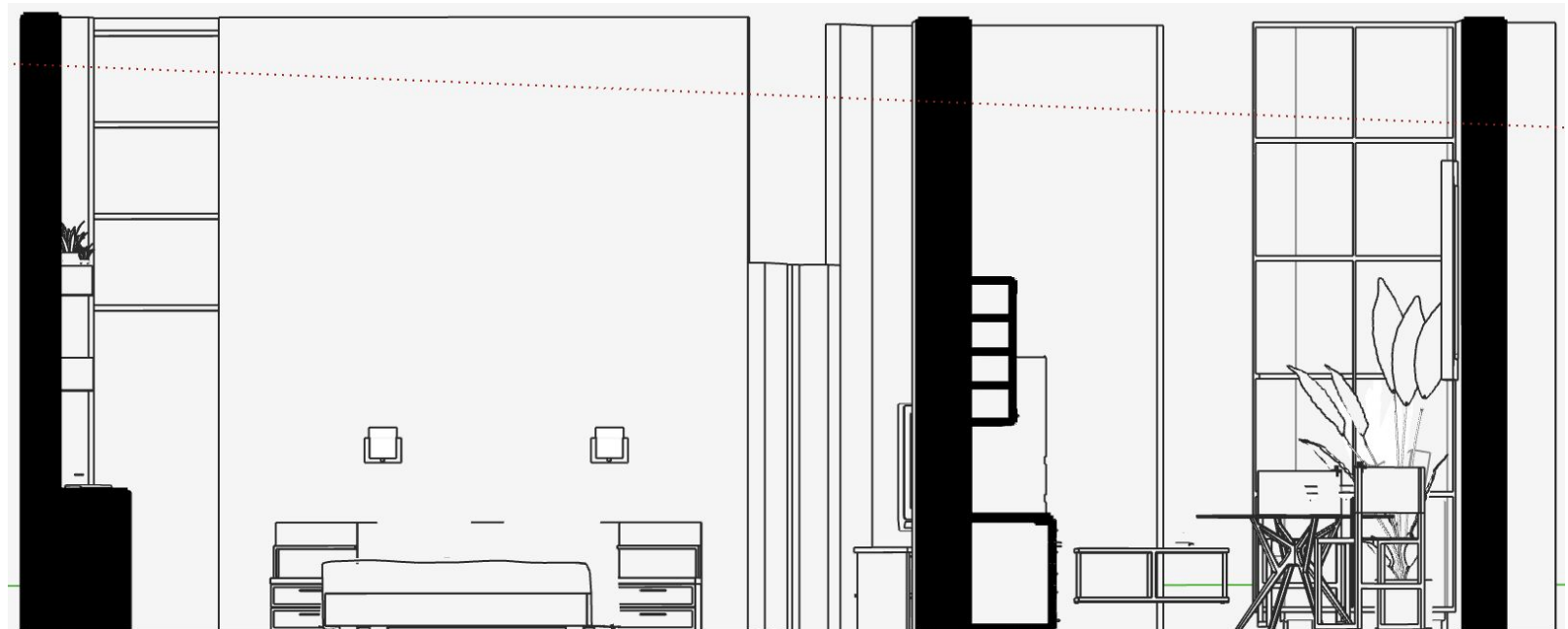
Floor Plan



Section 1

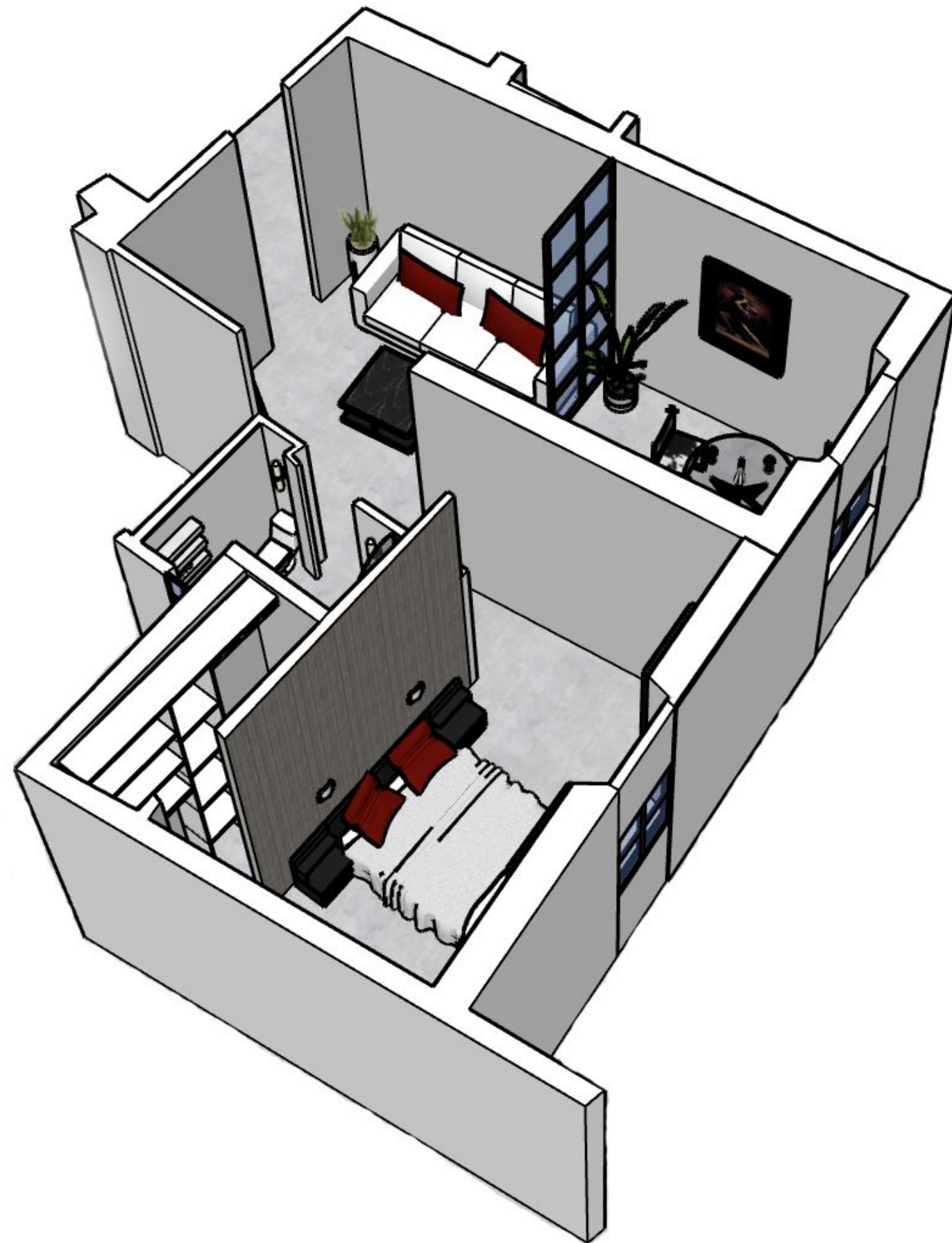


Section 2

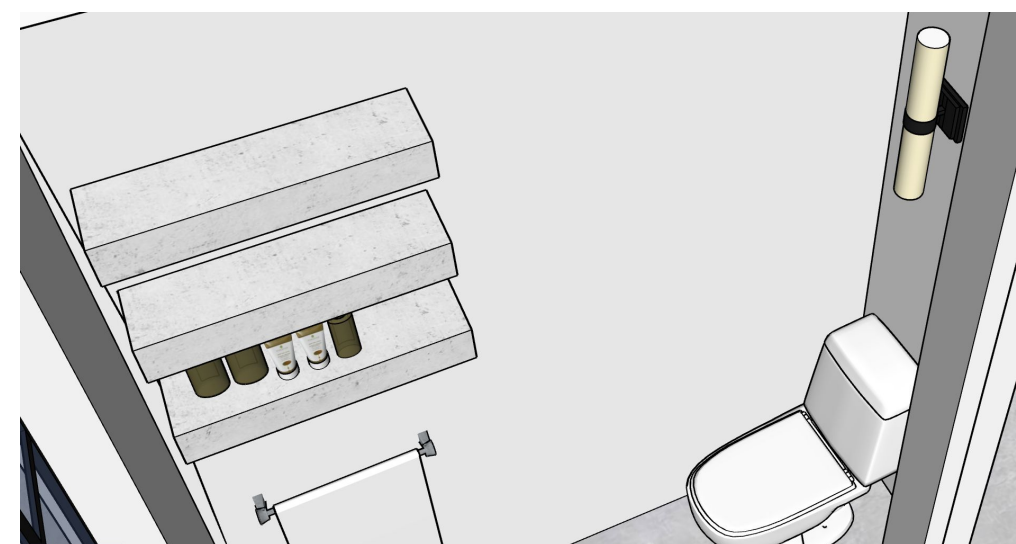
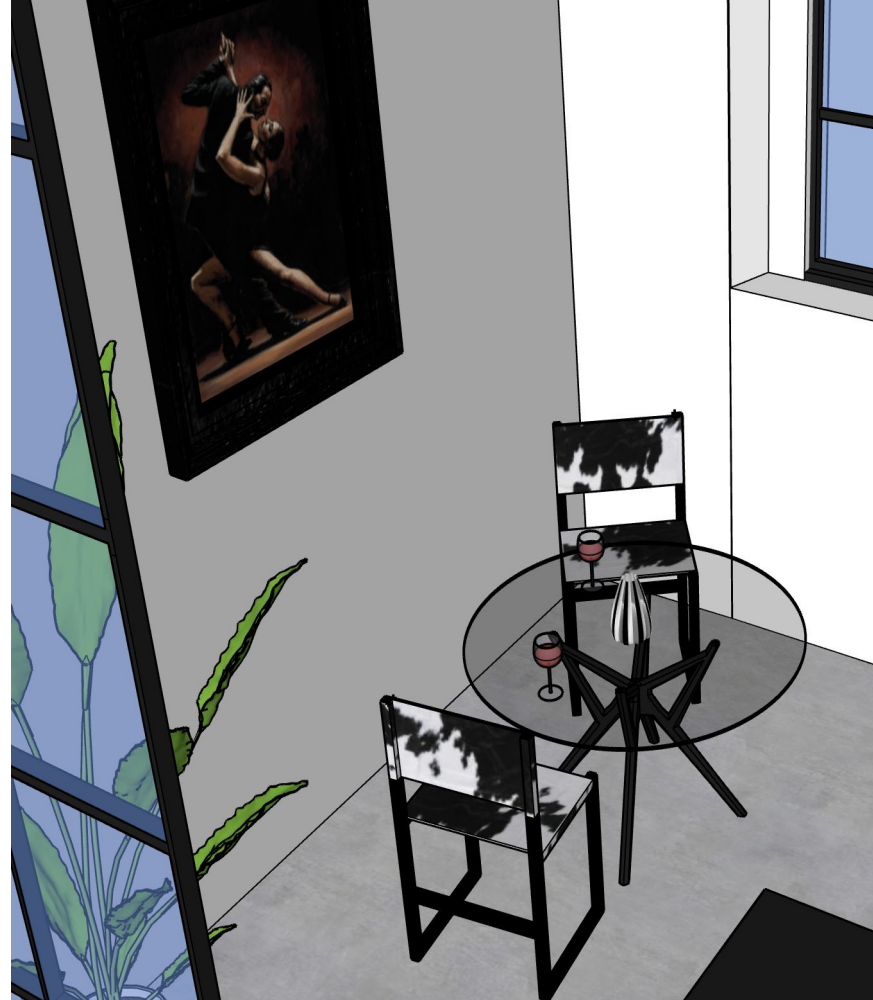




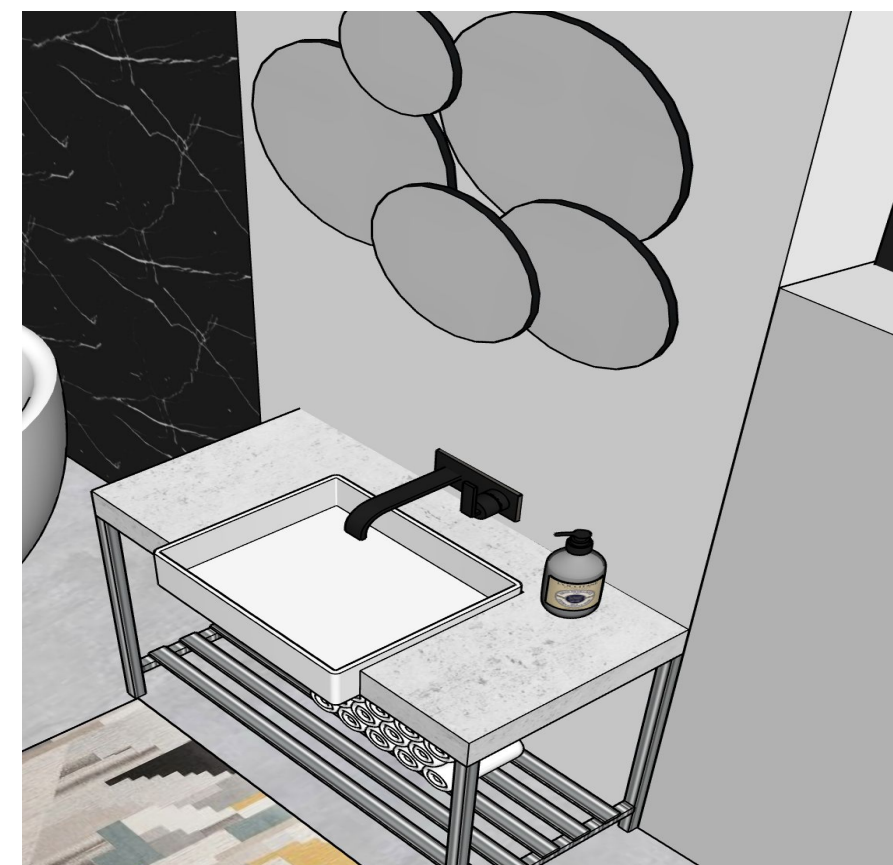
# Axonometric







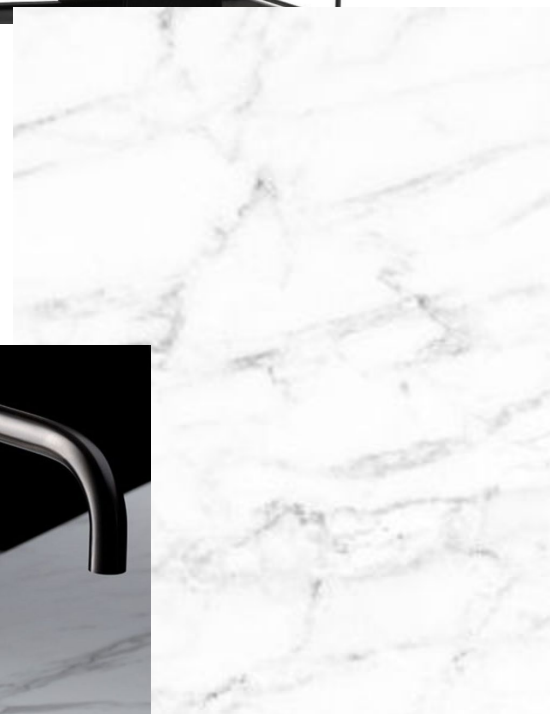
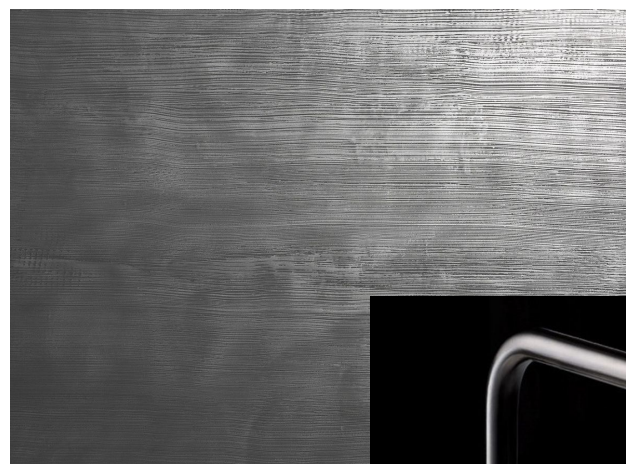
# Renderings





# Furnishings

## Kitchen



## Dining/Living



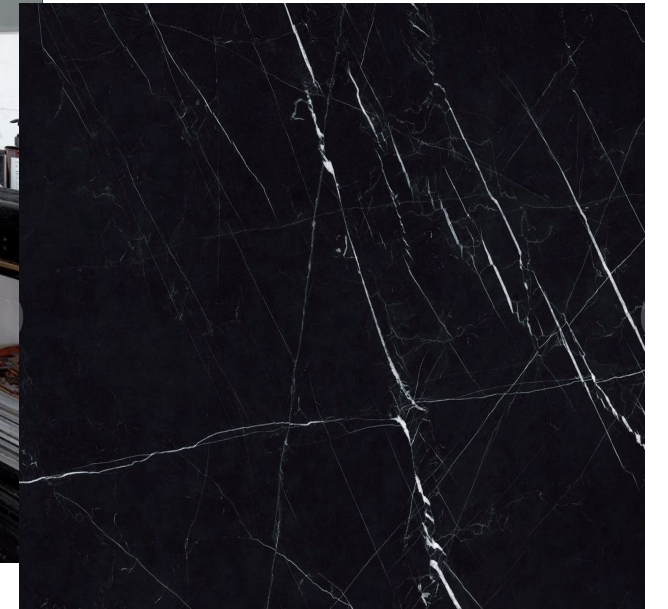


# Furnishings

Bedroom



Bathroom



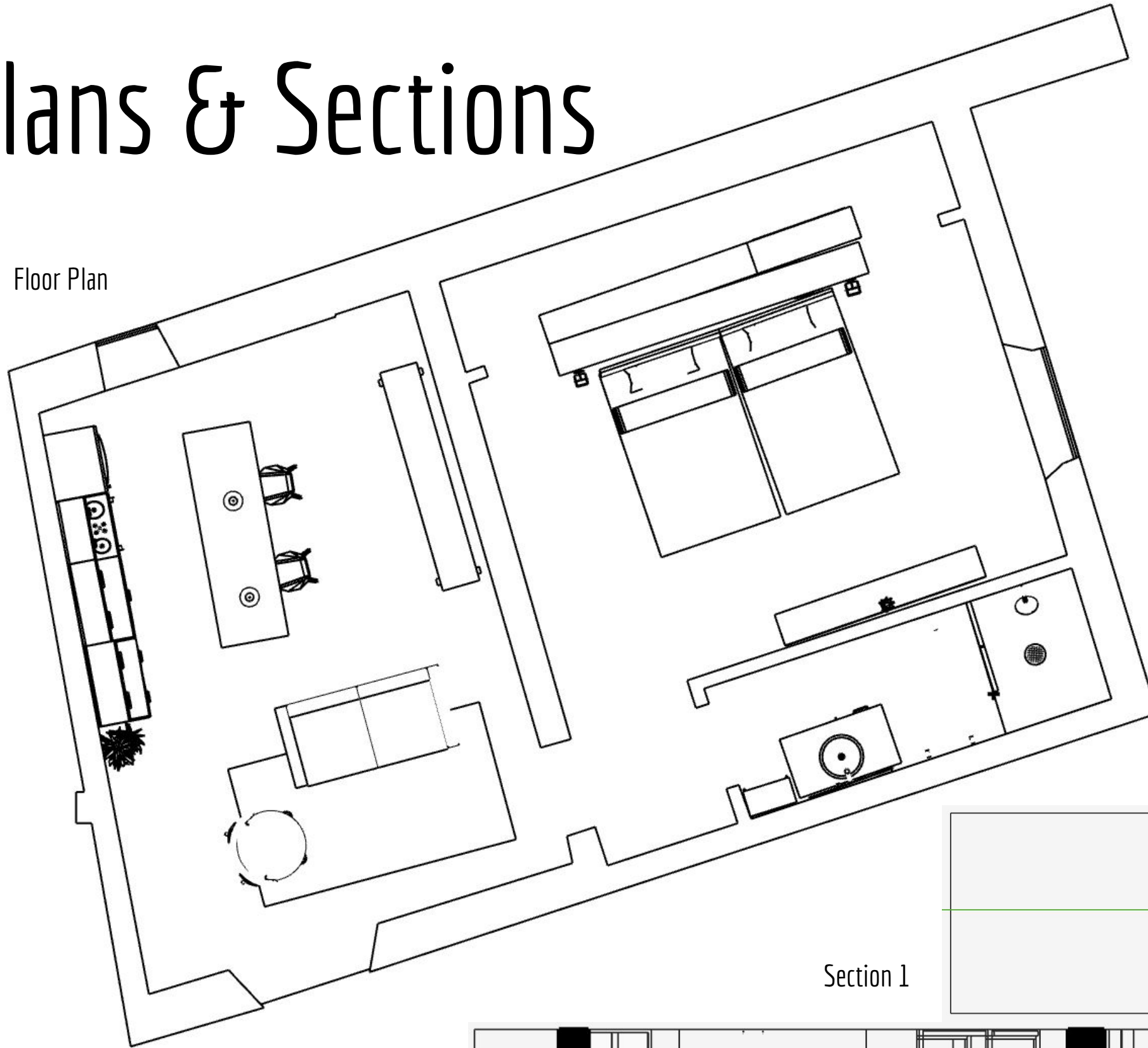


# Solo - Business Apartment

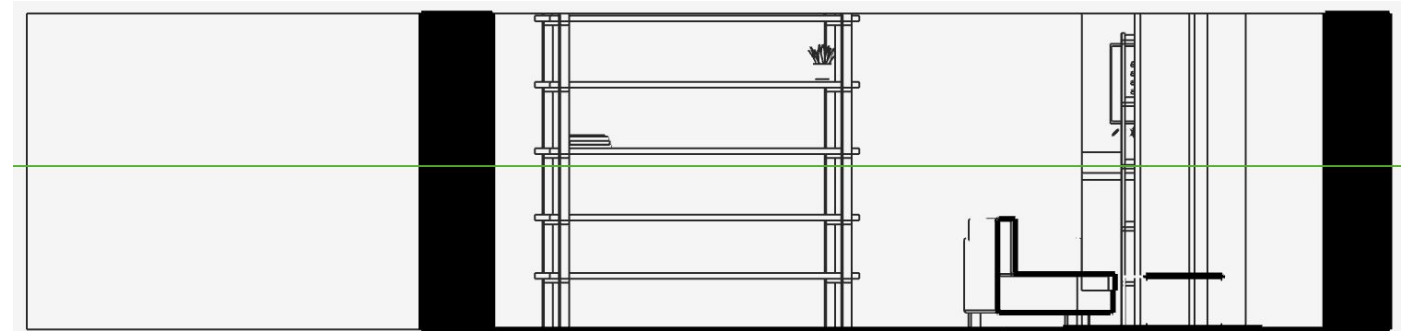


# Plans & Sections

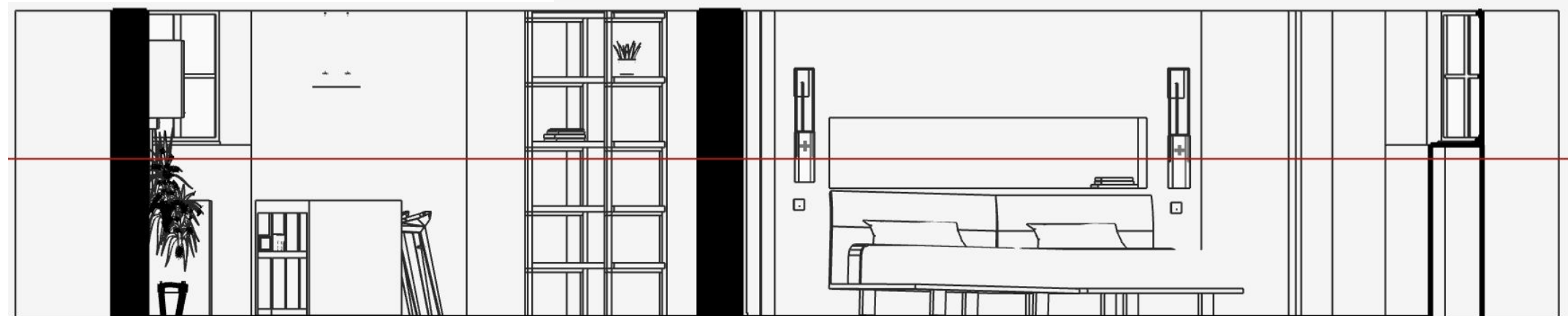
Floor Plan



Section 1

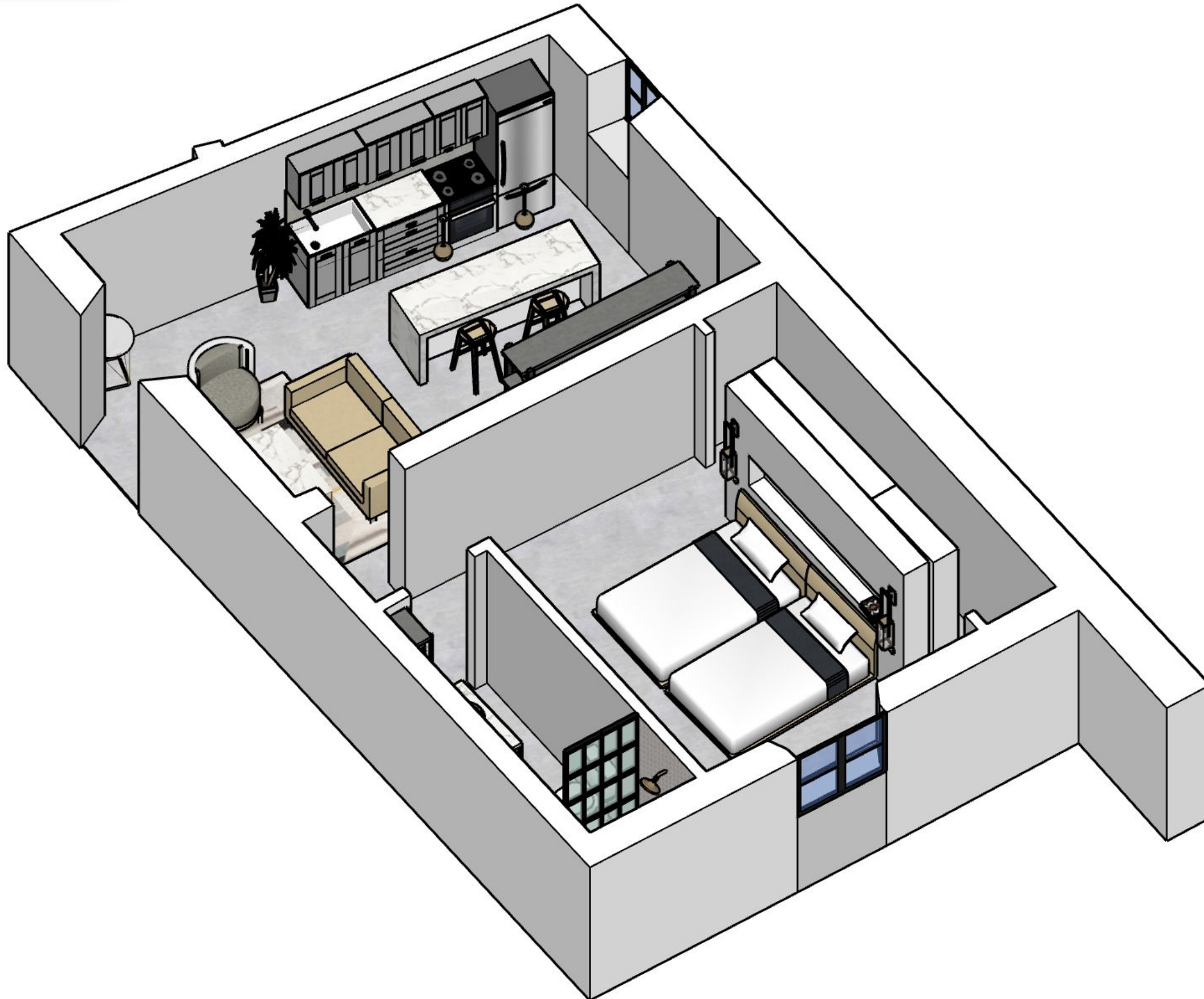


Section 2

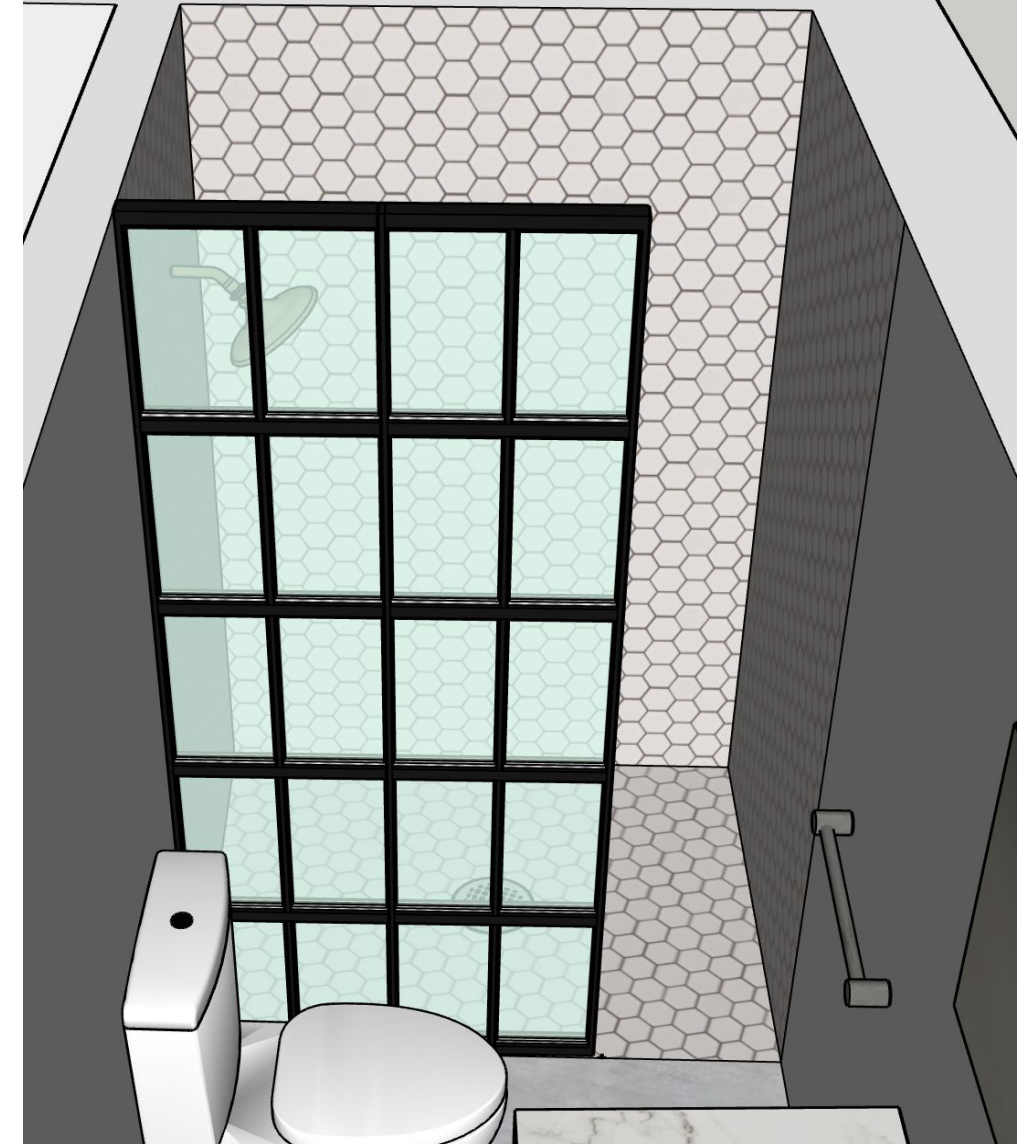




# Axonometric







# Renderings





# Furnishings

Kitchen



Dining/Living





# Furnishings

## Bedroom



## Bathroom

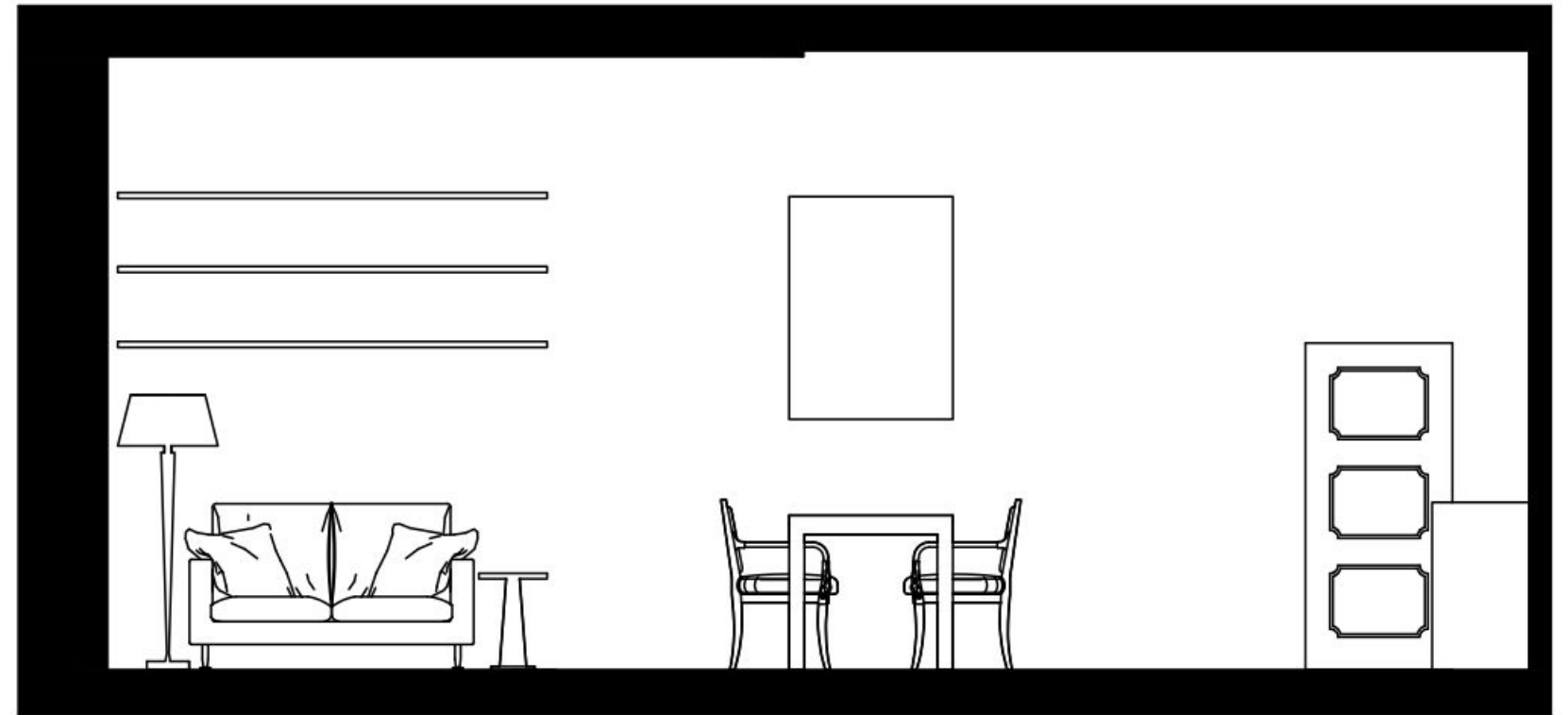
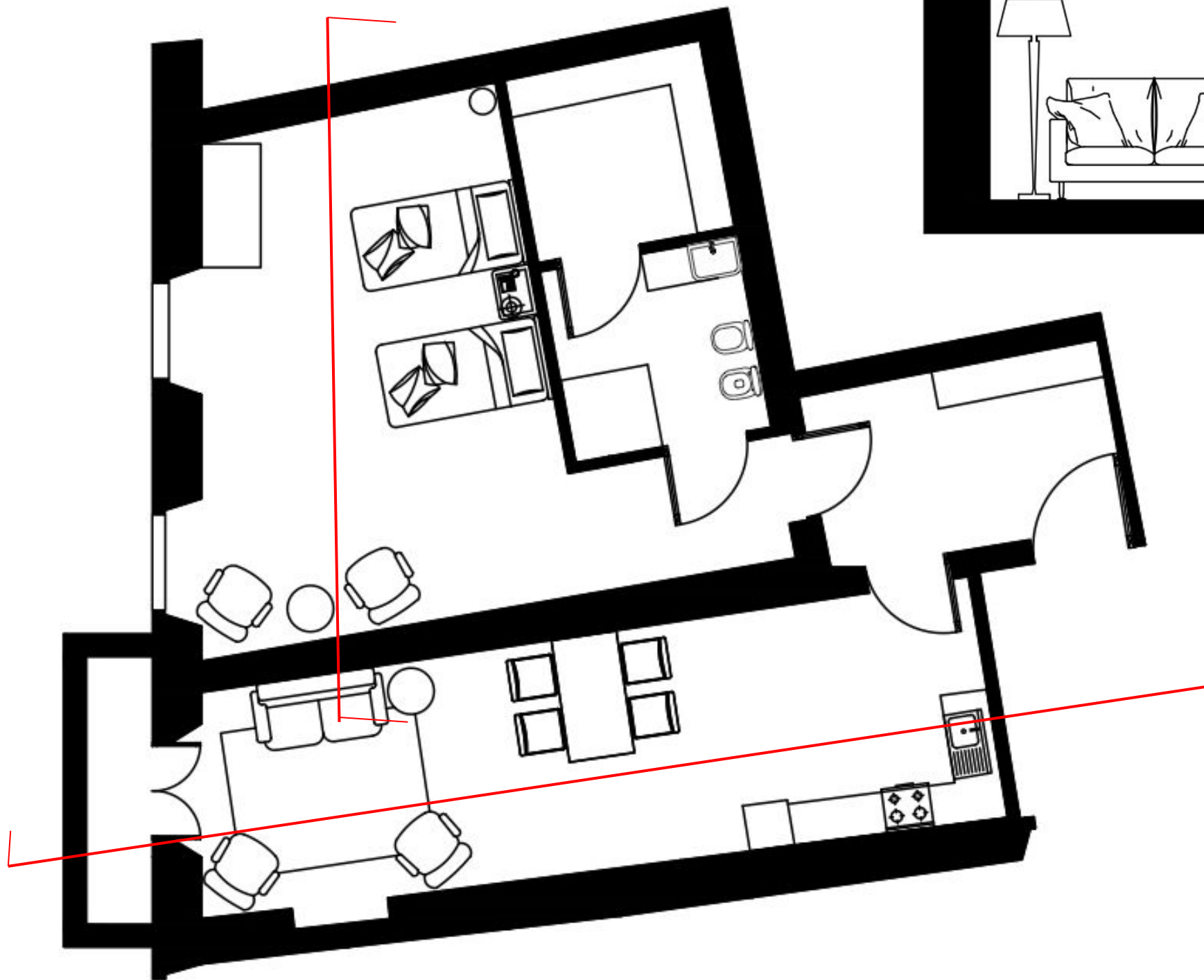




# Travelers Apartment

# Plans & Sections

Floor Plan



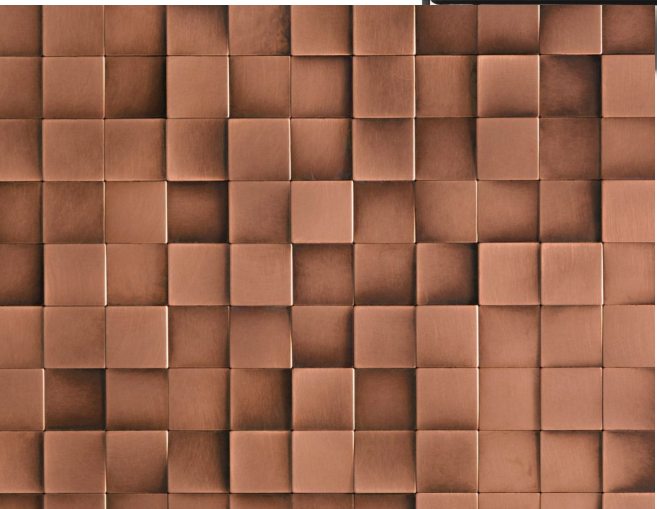


# Furnishings

## Kitchen



## Dining/Living





# Furnishings

## Bedroom



## Bathroom

