

# VMROS

Via de Macci Renovated Office Space

Project for Sustainable Interior Design II

IDSAP390

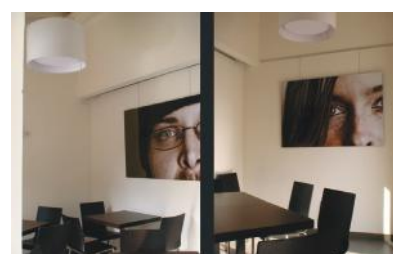
Spring 2020

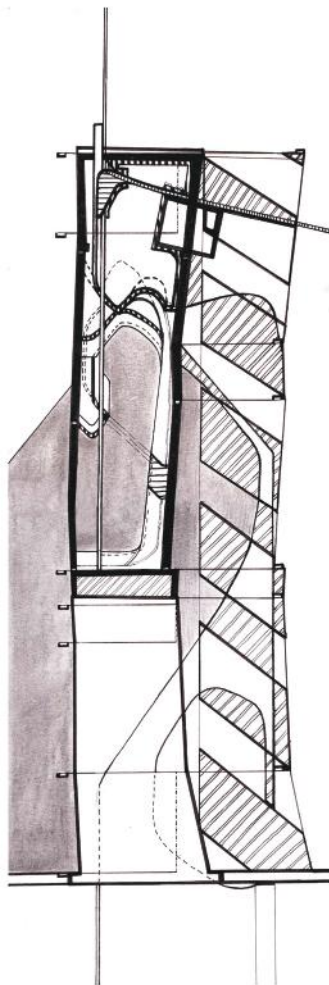
**Alberto Morselli**

**Clayton Monarch**

The client has asked us to develop a reception area, around 20 to 50 workstations, 2 closed meeting rooms, a cafeteria, 2 restrooms, a flexible space for temporary shops or artistic installation, and service areas (for mechanic plants, IT servers, storage).

The client has asked us to develop a reception area, around 20 to 50 workstations, 2 closed meeting rooms, a cafeteria, 2 restrooms, a flexible space for temporary shops or artistic installation, and service areas (for mechanic plants, IT servers, storage).





**VMROS** proposes a complete renovation of the existing space, including an addition of a three story structure in the courtyard for additional office space. The implementations unify the courtyard and the existing interior space through the use of a continuous and monumental form. This object encapsulates the needed functions of the space, defines axis of movement, and compensates for the pre existing buildings fluctuating structural composition. The formal composition reflects this relationship of the new implement with the existing condition as the form nestles into the void spaces. The inverted dome-like subtractions of the courtyard structure, a symmetrical relationship with the axis of movement, strange offset conditions of avoidance and compensation, and narrow configuration are all reflections of the underlying principles of Florence's urban condition. The summation, and therefore abstraction of these properties results in a nostalgic yet radically updated formal composition from the cities familiarity.

Standing in contrast to the existing conditions, the structure and subsequent interior spaces are executed in a mixture of glazed, gold lemon-color, clad paneling which cover the needed mechanical systems within. In the primary interior space the object contains lighting solutions, AC systems, duct work, electrical supply, etc., while the exterior structure includes these features, the wall and flooring tolerances compensate the structures needed steel wide flange members, hollow flange members, and steel studs. In the primary interior space a long bar, kitchen, and bathroom are the only fixed elements, allowing the space to be filled with varieties of furniture organizations for various events. The courtyard is leveled in front of the secondary structure and left on a gradual slope in the beginning to allow for the space to be as open as possible. The secondary structure features a first level cat walk connecting the primary interior space to the secondary under cover, reminiscent of Ponte Vecchio's elevated walkways. The first floor of the secondary structure is additional co-working space, including a bathroom, stair case, and elevator. The second and third floors feature private meeting areas and terraces giving views into the surrounding area and the courtyard.

Florence's historical significance is found in many respects, especially in the built environment. The many worldly sites of Florence constitute its current greatness. However, these sites have resulted in strenuous building codes in order to protect such structures. While historical preservation is a vital aspect of preserving Florence's heritage, its extreme levels are hindering the contemporary progress of design. Contemporary design in Florence is at most times left to enjoyment of individuals who have chosen to renovate their surroundings, whether it be interior design, or art. **VMROS** is an escape from this tradition of Renaissance formalism, however it does not diminish the integrity of the existing space. The contrast made by the old and new distinguishes a reality of progress and potential from preservation in order to elevate eaches cultural narrative.

product: WorkKit workstations  
year: 2008  
company: Vitra  
designer: Arik Levy

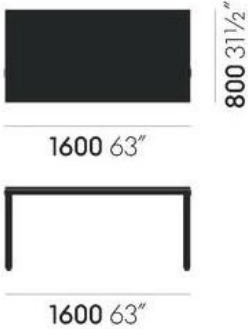


Double and Touchdown workstations

WorkKit double workstations are available in three sizes with a continuous table top. WorkKit Touchdown workstations for up to four

temporary workstations available in one size with a continuous table top. Technical unit available as an optional extra.

- 1600 x 1600 mm double workstation
- 1800 x 1600 mm double workstation
- 2000 x 1600 mm double workstation
- 2400 x 1600 mm Touchdown-workstation



product: HAL  
year: 2014  
company: Vitra  
designer: Jasper Morrison



product: Find Me 1 Mono Point  
year: 2017  
company: Flos



FLOS

Technical Specifications

Find Me 1 Mono Point (Trim/No Trim)

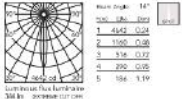
09.3751.30 - White

Recessed adjustable luminaire for indoor application. Remote power supply 500 mva not included.

Main specifications

Number of heads	1	Net lumen (lm)	344
Lamp category	LED	Mountings	Ceiling recessed
Power	6W	Environment	Indoor
CCT	2700K		
CRI	90		

Optical

Lighting type	Direct	
LED type	Power LED	
Light distribution	Symmetric	
Optical type	Spot	
Beam angle (°)	14	

Beam angle C90-270 (°)  
14


Electrical

Voltage (V)	12.00	Emergency	Without
Lamp holder	LED	Insulation class	II
Dimmable	Yes		
Driver	Remote		
Driver type	Electronic, dimmable 1-10V, Electronic, dimmable DALI		

Physical

Color	White	Rotation (°)	360
Orientation	Adjustable	Spot diameter (mm)	35
Recessed depth (mm)	132		
Weight (kg)	0.23		
Size (°)	20		

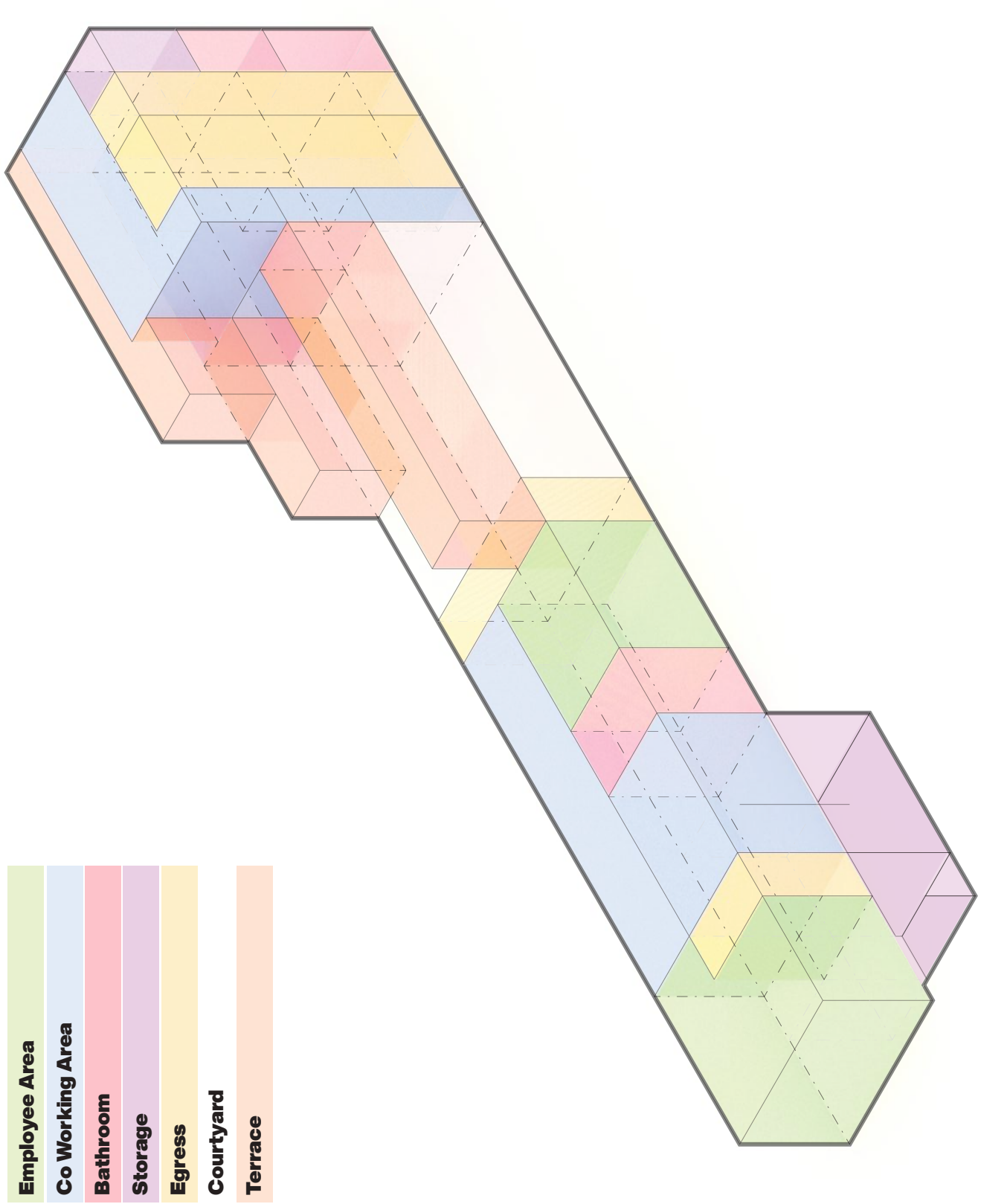
Certification / Marking



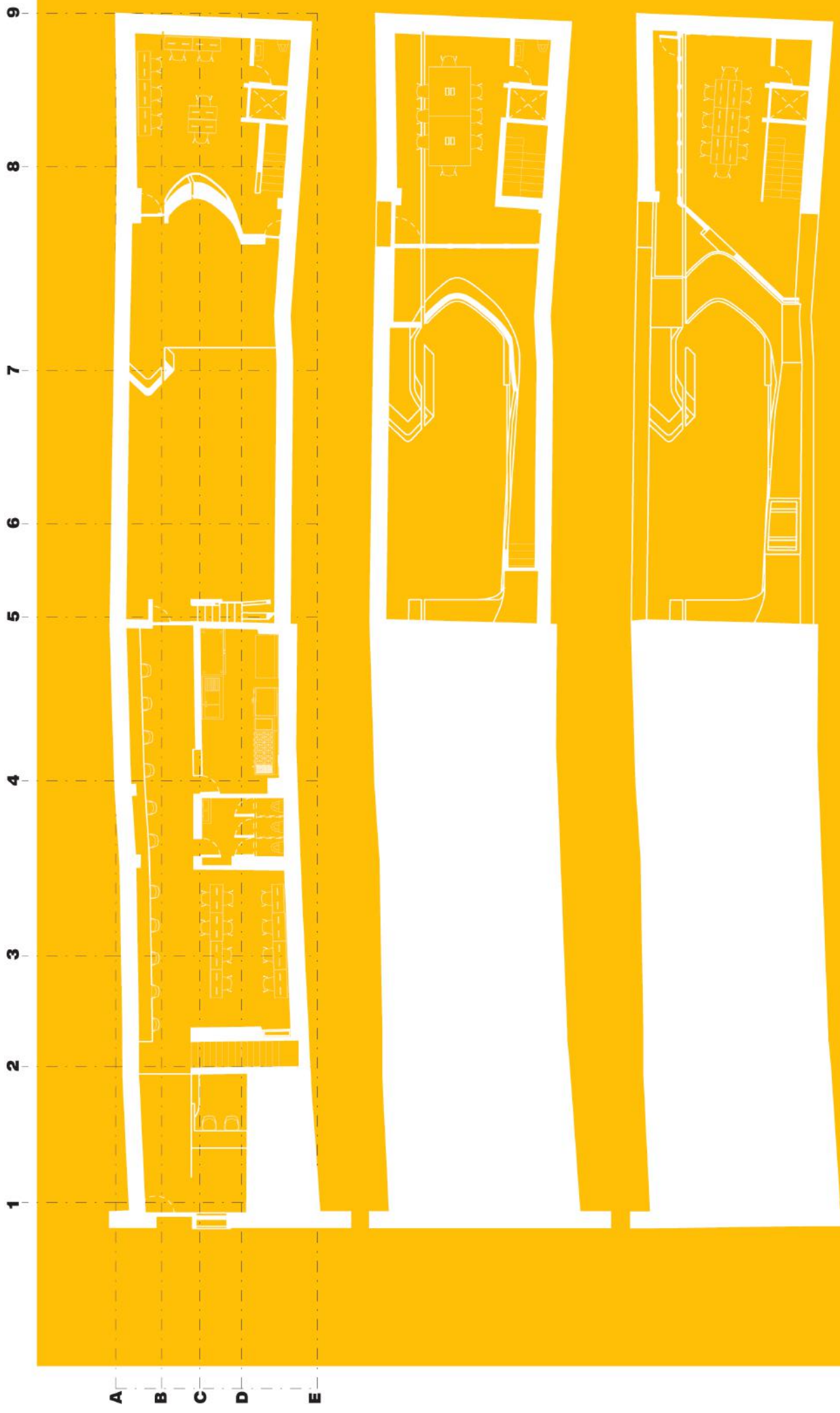
Note

Remote power supply to be installed in an accessible place. The MonoPoint version is supplied with a frame, which should be fitted to the product if a Trim version is required, or without, if a No Trim version is required. Accessories included (Photocomb and screwing crosspiece).





**DISTRIBUTION**



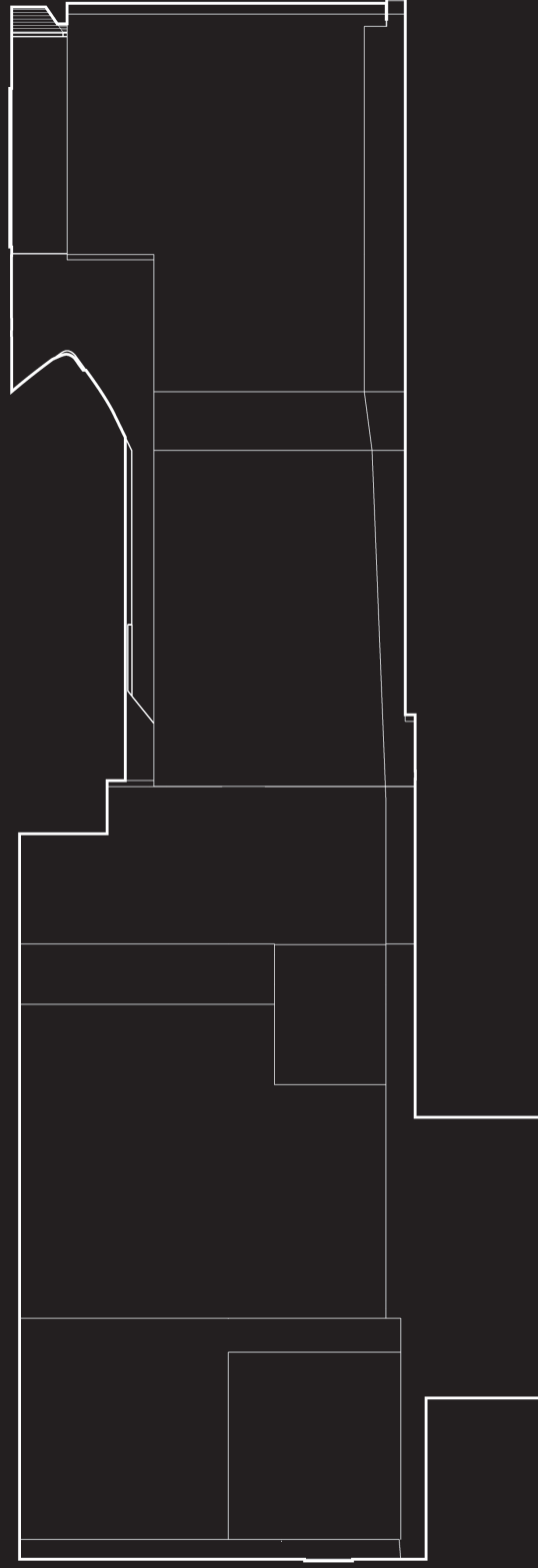
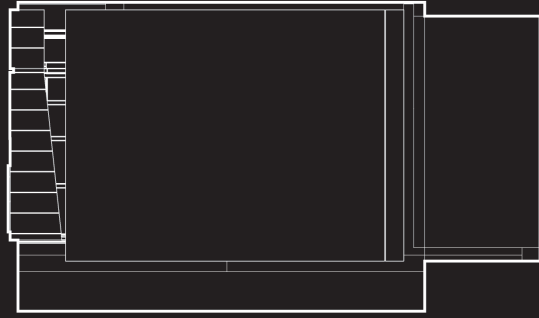
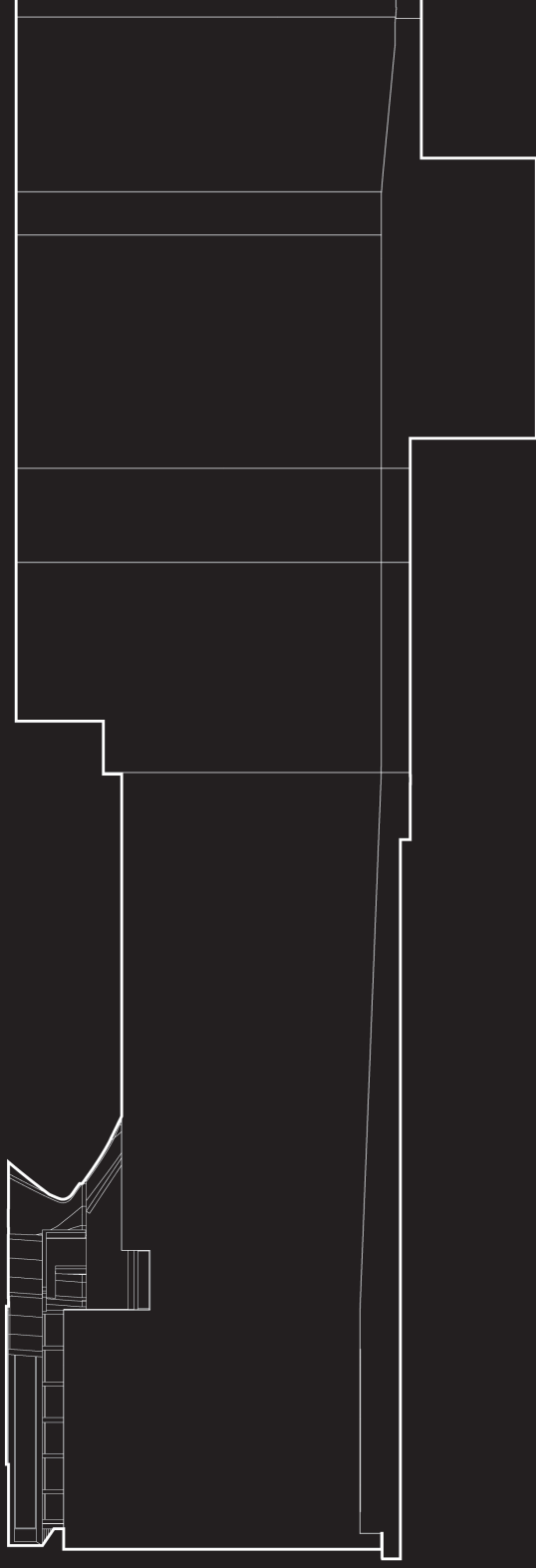




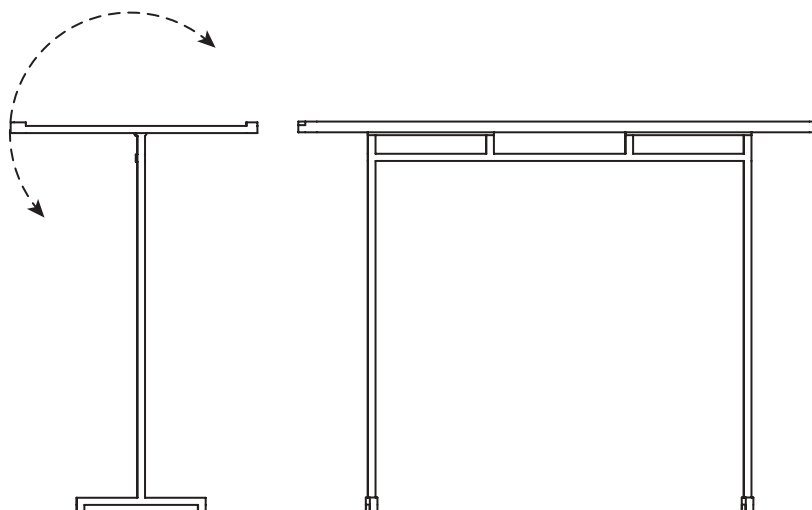
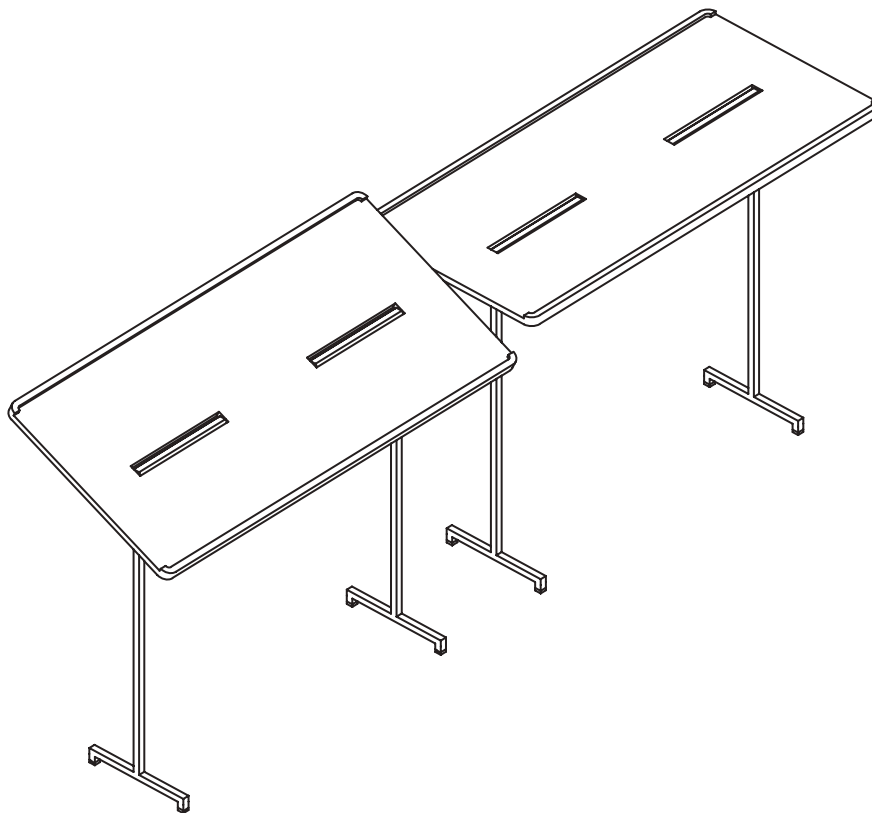
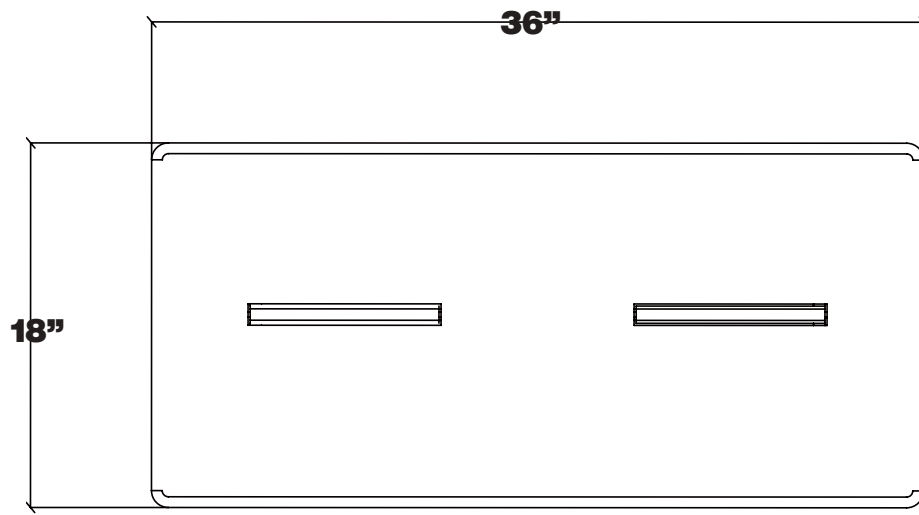


**PERSPECTIVE VIEWS**





**ELEVATIONS (NO SCALE)**



## WORKSTATION

Materials: Painted Steel Frame, Glazed Porcelain Top, Rotating Member, Rubber Gasket